



Soul Contracts

Deriving your soul's divine purpose from the
sound frequencies of your birth name

with Gellyahnah Aakhen

Welcome!

Hello fellow seeker, and welcome! ... My name is Gellyahnah.

While I've been intuitive my whole life, my spiritual journey began post my divorce in 2016.

Since then, I have been healing my traumas, studying esoteric mysticism, getting spiritually initiated, and helping people awaken to their soul's purpose in this lifetime.

Each one of us is here right now playing a crucial part in the awakening process -- and my role is to help you remember *WHO YOU ARE*.

You are more than just a human being having a physical experience.

You are an infinite spiritual being having a human experience and you're here for a very specific purpose.

And your unique purpose and unique talents are hidden within the sound of your *birth name*.

This guide is meant to explain the power of sound frequencies and how to get a better understanding of your purpose based on the sounds you carry within your name.

My Personal Story

When I first came across this work, it felt like one of those watershed moments in life.

Time stood still.

Every single cell in body was on alert.

I didn't quite understand what was happening, but I knew this information would be life changing.

After de-coding my own Soul Contract, my entire life finally made sense.

I was able to reach a new level of consciousness, understanding and forgiveness that seemed to allude me prior.

This moment changed the trajectory of my life and I knew that I had to share this sacred knowledge with as many people as possible.

This information is healing, eye opening and the most powerful truth I have ever experienced in my life.

It's truly my joy, pleasure and honor to introduce you to it ...

How this Method works

This methodology is based on an amazingly accurate system of Gematria numerology, sacred geometry, along with many elements of the Kaballah.

The premise of this method is that sound is extremely powerful when it comes to creating our reality ...

What do I mean by that? Here are 3 examples you've heard of to explain this.

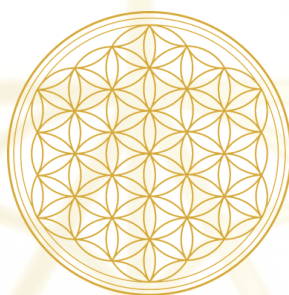
- **There is the scientific theory of how our universe was created, through the Big Bang theory. Bang, sounds, frequency = creation.**
- **Regardless of how you feel about the Bible, we've all heard that in the beginning there was literally nothing until God started to Speak things into existence. Of all the ways God could create, it was done through sound. The Word.**
- **You've most likely seen the Ohm symbol through out your life (on yoga gear, etc). Ohm is defined by Hindu scripture as being the primordial sound of creation. It is the original vibration of the universe.**

Sounds is powerful when it comes to Creation.

The sound frequencies found within your birth name, create your reality.

In order to generate your Soul Contract chart, your full birth name needs to be converted into the sounds of 22 phonetic Hebrew letters.

Hebrew is a sacred language that comes directly out of the movement and sound of God/Universe. This movement is contained in one of the most sacred geometric symbols on Earth, called the Flower of Life.



Sanskrit, another sacred language, when used in Indian Vedic readings, produces the same results as when we use Hebrew.

My purpose in doing this work is to help people understand what their soul signed up for in this life.

The soul will choose the frequencies that will create the Soul Contract it wants to experience in any given incarnation. This is how your soul is choosing to grow.

Simply put, the soul chooses it's name. It's the soul's job to get it to the parents and for the parents to get it correct.

Just ask any parent ... they all have a story of how they came up with their child's (children's) name.

By de-coding the sounds of your birth name, I'm able to see your Karmic patterns, unique talents, the goals you're designed to achieve – and most importantly, your soul's core purpose in this life.

Interested?

A woman with long dark hair, wearing a white off-the-shoulder dress with long sleeves and a high slit, stands barefoot in a shallow stream. She is looking down at her feet. The background is a forest with trees and fallen leaves.

What I've Learned

1

Your soul chose your birth name, prior to reincarnating

2

It reviewed all its past lives with its guides and masters and then chose a name that would create the optimal incarnate experience for it to know, learn about and experience itself as more of ALL That Is through the process we call life

3

This includes the time and location of birth as well as your culture

4

Your soul chooses the parents and the entire genetic lineage it wants to be born into and the time period on Earth's history

5

The soul also chooses all of the primary formative, karmic and ongoing relationships to engage with in order to create the experience it needs

6

It contracts with the other souls for them to play specific roles in its life

7

This is why when you meet certain people in your life who seem familiar, it's because you have played out many roles for each other in past lives

8

Souls have many lives because "the consciousness" wants to experience every aspect of reality

9

Every soul is a fragment of the Divine Light

10

We come here with complete amnesia - the goal is to wake up and remember who we (you) are

Generating Your Chart

Generating your own chart is a bit of a complex process and there is quite a bit of room for error if not trained properly.

However, I will give instructions in the next few pages, along with basic explanations of each frequency.

First, you'll see instructions on how to generate your chart. Below that, in this guide, are the sound frequencies that you'll need to associate with your birth name.

Please keep in mind, there are many layers to this work with much more complexity than I can explain in this PDF.

If you're interested in having a deep understanding of your Soul Contract, I would highly encourage you to either schedule a private session with me or purchase the Digital Soul Contract reading.

Options for both are listed at the end of this guide.

If you're having trouble creating your chart, you can simply look at the sound frequencies carried within your full birth name, as you will resonate with those as well.

Good luck and I hope to connect with you soon!

Sample Soul Chart

01/27/2022 16:22

Soul Contract Reading Analysis

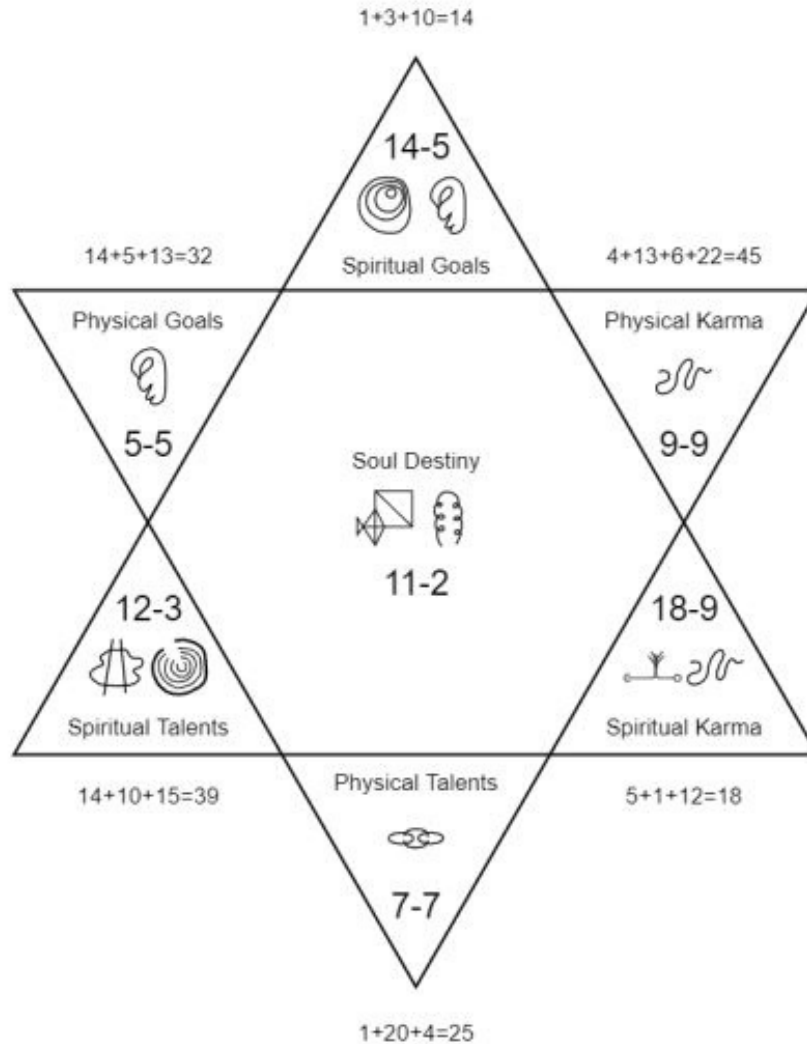
Deanna - Overlay - Deanna Marie Goldsmith

Page 1 of 1

Deanna Marie Goldsmith

D-E-A-N-N-A-M-A-R-I-E-G-O-L-D-S-M-I-T-H

4-5-1-14-14-1-13-1-20-10-5-3-6-12-4-15-13-10-22



Physical Karma	9	9
Physical Talents	7	7
Physical Goals	5	5
Spiritual Karma	18	9
Spiritual Talents	12	3
Spiritual Goals	14	5
	65	38
Soul Destiny	11	2

Birth Date

Age

Birth Sign

How to generate your chart

1. Write out the full birth name at the top of the Star of David (Merkabah) work sheet (found below).

The Soul Contract Reading process converts standard English alphabet phonetic sounds to Hebrew.

If you were born in a non-English speaking country, but your name was written in the Latin alphabet, use your name as it was written.

If you were born in a country where Latin language is NOT used on the birth certificate (ie in Russia or Greece), use the equivalent English letters that you would use for your birth name.

2. Look for the combination letters first.. This is very important, otherwise your chart will be wrong. The chart for combination letters is found on the following pages.

3. Assign the Hebrew sound frequencies to the letters in your name. See table found on the following pages.

4. Assign the numbers in a clockwise expanding spiral around the Star of David, starting at the Physical Karmic aspect. Cross off each number as you allocate it. The average person's name contains 15-18 letters.

5. You need a minimum of 10 phonetic sounds to do full six-pointed Star of David chart. If you have less than 10 phonetic sounds you will end up with a three-pointed Star instead. This uses generic karma, talents and goals (meaning, they are the same for each position). In this case, the Soul Destiny will be the same number as the Spiritual Goals.

6. Add up all the numbers at each of the six aspects on the Star.

7. If the sum total of an aspect is greater than 22 you will need to reduce it by adding up each individual digit in the total e.g. 34 becomes $3+4=7$, 135 becomes $1+3+5=9$. This gives you the left-hand number for the pair of aspect numbers concerned.

8. The right hand number for a pair of aspect numbers is determined by reducing the left hand number to its lowest form e.g. 17 is reduced as follows $1+7=8$., giving 17-8 as the pair of aspect numbers.

10 gives $1+0=1$ producing a 10-1.

For a single digit number like 9, we get $9+[\text{nothing}]=9$, producing 9-9, which what we call a double number.

The only really tricky one here is a 19, in this case we get $1+9=10$, which can be reduced further with $1+0=1$, so the final pair of aspect numbers is 19-1 with the 1 being the lowest form a 19 can take.

9. Take the physical aspects pairs of numbers i.e. karma, talents and goals and write them into the table at the bottom of the chart.

10. Do the same for the spiritual aspects.

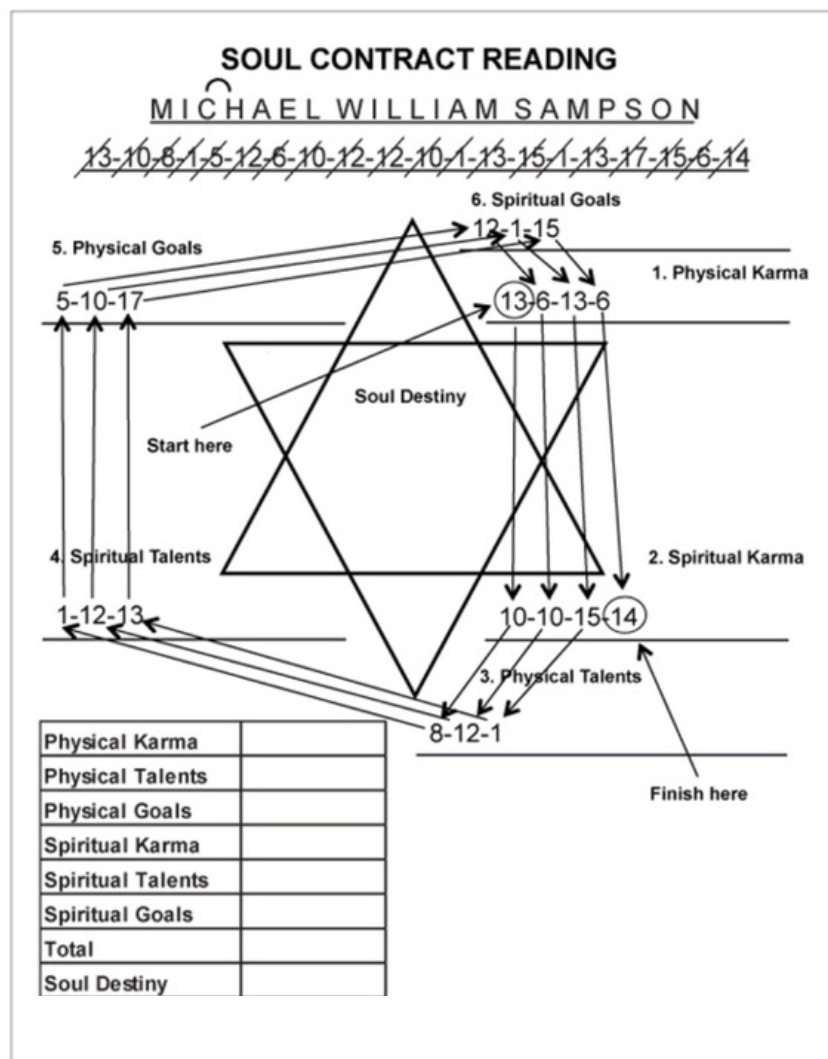
11. We have now separated the physical and spiritual aspects for ease of developing the interpretations of the chart.

12. Add up the left hand column then the right hand column of numbers.

13. If the left-hand column total is greater than 22, reduce it using the same process as point 7.

14. Reduce the right-hand total to the smallest possible number using the same process as in points 7 and 8. This number should be a reduction of the left-hand total and is a good check that you have done the math correctly.

15. The left and right-hand totals produce the soul destiny, the overall purpose of Incarnation



*Sample chart image and instructions from my teacher Nicolas David Ngan



Physical Karma		
Physical Talents		
Physical Goals		
Spiritual Karma		
Spiritual Talents		
Spiritual Goals		
TOTAL		
Soul Destiny		

English Letter	Hebrew Letter/ Pronunciation	Number Value	English Letter	Hebrew Letter/ Pronunciation	Number Value
A	Aleph / א	1	N	Nun / נ	14
B	Bet / ב	2	O	Vuv / ו	6
C	Kaf / כ	11	P	Peh / פ	17
D	Daled / ד	4	Q	Kof / ק	19
E	Heh / ה	5	R	Resch / ר	20
F	Peh / פ	17	S	Samech / ס	15
G	Gimel / ג	3	T	Tet / ט	9
H	Heh / ה	5	U	Vuv / ו	6
I	Yud / י	10	V	Vuv / ו	6
J	Yud / י	10	W	Vuv / ו	6
K	Kof / ק	19	X	Samech / ס	15
L	Lamed / ל	12	Y	Ayen / ף	16
M	Mem / מ	13	Z	Zayin / ז	7

When the following combinations of letters appear, they take precedence over two single letters.

It is very important to be very careful when erecting a chart with these. You must always double check your addition.

If you have missed a combination letter you will need to start again.

English Letter	Hebrew Letter/ Pronunciation	Number Value	
AH	Heh / ה	5	
CH	Het / ח	8	
WH	Ayen / ע	16	
TZ	Tzaddi / צ	18	
SH	Shin / ש	21	
TA	Tav / ת	22	
TH	Tav / ת	22	
Final 'M'	Mem / מ	12	Use, when this letter appears at the very end of a name (i.e. Adam)
Final 'P'	Peh / פ	12	Use, when this letter appears at the very end of a name (i.e. Phillip)

What does this all mean?

The next few pages will give a basic description of each frequency. Read the ones that are found within your chart.

If you didn't put your full chart together, then look at the ones that are found within your name.

For instance, if your name starts with a "D," then read the description for the 4-4 frequency.

1-1 (Aleph)



Keywords: Unity, Power, Stability

Very powerful connection to Archangel Michael, the masculine aspect of Source. When you see a 1-1 in your chart, ask yourself if you had masculine disempowerment as a child or at any point in your life. Maybe you were criticized growing up, or maybe you are now a bit of a perfectionist. This frequency can bring feelings of abandonment, separation, avoidance, and denial with it. Have any of these themes played out in your life? There will usually be a theme in life of transmuting shadow patterns in order to achieve an incredible personal transformation into your true essence. You will literally then be reborn. This usually happens on a subconscious level as life goes on. At some point in life, you will feel like you're literally stepping into a new reality/you. You are able to see the unity consciousness in everything and truly understand that we are all one. You enjoy being of service to others, stability is very important to you and you are here to share your knowledge. Oftentimes, these frequencies also signify that you carry natural healing abilities.

2-2



Keywords: Wisdom, support, resilience, objectivity

Were you a sensitive child growing up? This frequency is all about learning resilience in life, so often times people who carry this frequency tend to start out in life as very sensitive. They don't like to try new things because the shock of failing might be too much. Their goal is also to learn objectivity, so oftentimes they make "foolish" choices in life. Maybe bad friends, relationships, and overall, not the wisest decisions. The reason it plays out like this is because they are meant to become very wise, resilient, and objective because they are here to share their life experiences with others in order to help others on their journey. As you become resilient, you are able to support all of life's ups and downs for yourself and those around you. At the core, you are extremely supportive of everyone around you. val

3-3 (Gimel)



Keywords: Communication, Master teacher, Worthiness

Very often when a 3 frequency appears in your chart, you are here to learn the lesson of self-worth. Growing up, were not seen by your family? Were you overlooked? Were you shy? Were you the kid in the back of the classroom that didn't want to get picked on? You are an old soul who has brought immense wisdom into this life and you have to find your worth, your voice, and your stage in order to share it. How will you share your knowledge? Will you write a book? Will you speak it out loud? While you might be a master communicator in the professional world, do you have a difficult time expressing yourself to those around you? Oftentimes, the people carrying the 3 frequency push their feelings deep inside, so much so that they'll disassociate and will have to literally dig for their feelings inside their inner labyrinth to know how they feel about something. But you, my friend, are a master teacher. You are a teacher who teaches from a soul level, and those around you know it. That's why they listen when you talk. You might also experience ringing in your ears with this frequency ... that's your guides' way of trying to communicate to you.

4-4 (Daled)



Keywords: Trust, Faith, Abundance

Often this frequency shows up in people's charts when they've experienced abandonment. This could have been from either one of the parents leaving at a young age, sudden death, and/or maybe a theme in relationships. If abandonment hasn't been a theme in your life, this often shows up when you have a difficult time trusting. Maybe you're insecure in yourself or don't trust that things will just work out for you. Sometimes life tends to be a rollercoaster, but right before you hit rock bottom, something happens and you go back up. Sound familiar? You are here to learn to TRUST that everything will work out and you have an abundance of everything in your life: love, money, friendship ... anything you want. Most likely, you're very generous and often times over-share to your own detriment. There has to be an equal amount of give-and-take. If you've ever had any unplanned pregnancies, it would be from this frequency in your chart. Your children are part of the lesson for you to learn that there truly is an abundance of everything in life. Oh, and hello, you are a master manifester!

5-5 (Hey)

Keywords: Truth, Intuitive, Sensitive, Free Spirit



This is a highly sensitive frequency as it is very etheric. You are most likely an empath and possibly have had challenges with anxiety at some point or other in your life. The anxiety comes from being so sensitive and feeling EVERYTHING, including unconsciously tapping into the collective consciousness and feeling everyone's worries (without realizing that's what you're doing). You're also very intuitive, whether you know it or not. Oftentimes, the people who tell me they don't think they are intuitive, don't realize that half their decisions are based on their intuition - and they assume it's just their mind coming up with ideas. You're also probably in your head quite a bit. People with this frequency don't like to be held down, they are free spirits and you're here to express your deep truth. Did you feel like if you ever spoke your truth in the past you would get into trouble or something bad would happen? Or maybe you are overly blunt with your truth? Either case is an imbalance. You are here to speak the truth, but do it in a way that's going to be received well so you don't accidentally cause harm. Too many 5s in your chart might speak of you having tendencies to manipulate situations and plant "false truths" into other people's minds.

6-6 (Vuv)

Keywords: Ideas, Focus, Creativity



If there is a 6 frequency anywhere in your chart, you most likely have an "A.D.D" type of energy (lack of focus). Unless you have mastered the shadow side and lean into the ability to be laser-focused - as this is where you're meant to end up. This energy is all about creativity. Maybe you're artistically gifted or maybe you have a lot of ideas. Often times in readings, I ask the client with 6s if they are creative, and they say no because they think I'm asking if they paint. Creative doesn't mean artistic. To be creative literally means to create something. Do you have ideas that you'd like to pursue? Are you in marketing? Are you a business owner? The core of this frequency talks about you birthing your ideas into the physical reality. Most people with this frequency, though, have a challenging time focusing. Either they don't pursue their ideas because they need guaranteed success or they have too many things happening at once and they can't see their projects through. You need to learn to prioritize and focus. Also, if you've ever had any struggles with addictions (or anyone in your family has), it would come from this frequency. This one is associated with the Taurus energy, so it can show up with a temper as well. The more you are connected to your soul's essence and are actually able to create what you're here to create, the easier life will flow for you. If you're feeling blocked in life, it might be from the blockage to the soul. A simple way to know is if you have a 6 in your chart and you are not creating anything - you most likely have a block.

7-7 (Zayin)

7

Keywords: To heal and open up the heart, Networking, Connecting

Do people have a really easy time opening up to you? Sometimes even strangers? Do they oftentimes find themselves saying “Why am I even telling you all of this?” That’s because you are a people magnet. You are here to help people heal their hearts, and when people share their traumas with you, it becomes very heart-healing for them. You, on the other hand, don’t like people knowing your business. You don’t want people knowing your vulnerabilities and even if/when you do share, it’s going to be very controlled. You are here to learn how to heal your heart so you feel safe enough to be vulnerable and truly connect with people. Stop wearing different masks and just be your authentic self in every situation. You may have experienced quite a bit of heartache in life, but that’s because you are here to learn how to heal your heart and help others do the same. This is the ultimate people frequency. You can bring people together, help them make decisions (even though you might be indecisive), and help them move forward in life.

8-8 (Het)

8

Keywords: Grounding, Emotions, Clairvoyant

In my experience, I’ve found that if you have an 8 in either your Karmic positions or Soul Destiny, you were one of the first souls to volunteer to come to Earth and help raise the vibration, but when you got here you said to yourself “what was I thinking? It’s cold here, people aren’t nice.” You are a very high vibrational being (incarnating from a higher dimension) and trying to live in a very dense dimension, that is Earth. Yikes. This could create a very challenging experience. You may have had mental health challenges, or perhaps you’re interested in helping others with their mental health. Oftentimes times people carrying this frequency are very sensitive children who are told not to cry and put their emotions away. So as adults, they tend to numb themselves out. They become workaholics, alcoholics, etc. Do you tend to want to fix other people? Remember, there is a big difference between helping and fixing. Don’t be a fixer. And how are your boundaries? Most 8s have a very challenging time with boundaries and it’s a constant work in progress. Of course, you are also very emotionally intelligent, practical, and possibly clairvoyant. I get many mediums coming to me that carry the 8 frequency. You are very elemental and connect with nature and animals very easily. Often times the 8s love animals more than people.

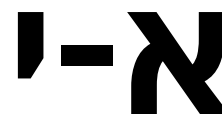
9-9 (Tet)



Keywords: Power, Protection, Peacemaker

This is the most powerful frequency in the entire modality. This is a dragon. Growing up, it's possible that you experience quite a bit of disempowerment. Perhaps an unhealthy childhood? Maybe abuse? Bulling? Attracting narcissists into your life? You were experiencing the contrast of what it means to be without power because a big part of your journey is to realize that YOU are the dragon. You are the powerful one and you are here to step into your power and not ever allow anyone else to ever take it away (or yourself give it away). People who carry this frequency usually have a very quiet knowing that they are immensely protected. They know that no matter what happens in life, they will always be okay. Sometimes, they do feel their dragon and almost fear their own power knowing how destructive it can be (if it leans towards the shadow side). The 9s tend to be very intuitive and oftentimes gifted psychically. You are here to be a catalyst for people and to help them achieve breakthroughs. Of course, if those people aren't ready to move, you could be very triggering as well. Too many 9s in your chart might be harsh on your body as this is Source energy running through you (back problems?). If you have 9s in any of your Talent positions, there is literally NOTHING in this life that you can't accomplish.

10-1 (Yud and Aleph)



Keywords: Service Soul, Healer

If this frequency shows up anywhere in your chart, you are a service soul and you're here to serve Source. It might sound cliché, but you're someone who finds helping others truly fulfilling on a soul level. Growing up, the 10-1s might feel criticized and possibly have issues with their fathers and/or other males in their life. This can show up as the father wound. If you don't have challenges with masculine energy, perhaps you have an imbalance of masculine/feminine energies within you. Are you a female who is very much in her masculine because you have to protect yourself? Or a male who is very much in touch with his feminine? Perhaps you were into material things growing up, but you are here to find your way toward service. Stability isn't always found in the "earthly material" things ... often times it's found in our soul. You are a natural healer, even if you aren't the least bit into spirituality. This is the highest vibrational frequency in this modality.

11-2 (Kaf and Bet)

כ-ב

Keywords: Assimilation, Structure, Harmony

Hello, empath! This frequency is extremely sensitive and tends to act like a sponge in our younger years. It does a really good job of assimilating all the dysfunctional patterns around us and as a result ... people that carry this frequency begin to build their lives on false beliefs that aren't theirs. Perhaps you had a dysfunctional childhood, but because you grew up that way, you thought it was normal and you begin to build your own life on these thoughts. At some point, you are meant to wake up (oftentimes following a traumatic life event) and realize that "this is not your core life philosophy." You are meant to deconstruct all the false beliefs you absorbed and rebuild life from your own personal truth. Because of this pattern, you might experience quite a bit of loss in life (ie - divorce, friendships, jobs, passing of loved ones, and/or possibly your own near-death experience in an extreme case). But you are here to build a strong foundation of truth and a legacy. A business? A community? Write a book? You are also very harmonious (maybe a people pleaser when younger) and make a natural therapist as people feel very protected in your aura.

12-3 (Lamed and Gimmel)

ל-ג

Keywords: Love, Balance, Expansion

If you have the 12-3 frequency anywhere in your chart, you might have a challenging time sitting still. 12 is a frequency of expansion, so it always wants to be on the move, which can ultimately lead to burnout. Sitting still and allowing your feelings to come up is an incredibly therapeutic activity for you. While you are here to expand, you are also here to learn balance. There is an extreme energy with the 12 ... for example, if you find something that you're interested in, you will go down the rabbit hole learning about it. It might be difficult to have just one cookie, you might end up eating the entire box. But on the other hand, you are also very nurturing, possibly mothering everyone around you. I often get nurses coming to me with the 12-3 frequency because they are natural caretakers. How is your prioritization of self? Oftentimes, you might put everyone else first and yourself last (due to a lack of self-worth/love). You are worthy of love, time, and attention. Your ultimate goal is to be a teacher of sorts (podcasting or writing books), expressing the seep soul wisdom and internalized concepts that you brought into this life as well as to create a lot of wealth, beauty, and joy in life.

13-4 (Mem and Daled)

T-n

Keywords: Unconditional divine love, Divine Feminine, Mercy

This is one of the most beautiful frequencies to have in a chart. It's the frequency of unconditional love that we all seek to experience. However, it might show up as a mother wound. Did you ever have an emotional disconnect from your mother? This frequency is connected to the heart chakra and often signifies an occurrence at some point in life that shuts your heart chakra down. The journey in life for you becomes one of healing your heart chakra to open it back up. I find that people carrying this frequency are very loving, but when someone crosses them they can turn into "ice queen" really fast. Once you heal your heart, you have the gift of mercy. The gift of unconditionally forgiving people, which is so unique and rare in this world. The theme of your life might have been to learn unconditional forgiveness. You are here to help the needy - who are usually animals, children, and incapacitated adults.

14-5 (Nun and Het)

n-j

Keywords: Intensity, Psychic, Mirror

This can be a very intense frequency. Do you find that you tend to have intense relationships in your life? Have people given you that feedback? This is because you have a very reflective energy. You have a way of reflecting things to people that they don't often see within themselves and they do the same to you (this is what can cause the intensity). You might get heavily involved with others to learn self-acceptance, and who you are. Most likely, you're sensitive to energy, and perhaps even psychic. If you're not feeling your psychic abilities, try taking courses on how you might be able to access this talent within you. In some capacity, you are here to be inspirational to others by being your expressive self. Maybe you're writing a book or creating something else that will uplift people. You might be terrified of being abandoned in a relationship, be careful of not becoming obsessive. With this frequency, you're able to help people break through their own limiting consciousness.

15-6 (Samech and Vav)

I-ו

Keywords: Connection to higher self, immense creativity, variety

Have you ever felt like you've gone in circles in life? Or maybe trying out different college majors and careers without ever feeling settled? For you, variety is truly the spice of life. This frequency takes you on a gentle spiritual journey on which you're meant to find what your inner and outer world is really about (without outside influence). Often this frequency can lead to procrastination or over-analyzing an idea to the point of "paralysis analysis." You're being asked to take more risks. Because at the core of this frequency, you are highly intuitive and very much connected to your soul, from which all your ideas stem from. You have incredible gut instinct. Follow it.

16-7 (Ayin and Heh)

ה-ץ

Keywords: Down to Earth, Relatable, Authentic

Having this frequency in your chart tells me that you are a very relatable person. Do you find that you have a variety of friends from all walks of life? I sometimes call this the "lost puppy" frequency ... because all the lost puppies follow you home. People feel very comfortable around you and you have great leadership skills. This is the ideal frequency for someone in a managerial role or HR. You have a way of explaining very complex concepts in a way that makes sense to people. A big part of your journey is to "bridge heaven and earth." You are a natural receiver of divine love and you are here to help people feel it and receive it. However, where you might get "stuck" is by getting overly focused on the physical realm of your existence and possibly even denying your spiritual side. You truly hold the power of having your cup half full or half empty - the choice is yours. If you decide to accept spirituality into your life, the divine love will flow right through you and into others.

17-8 (Peh and Chet)



Keywords: Speech, Expression into Society, Mouthpiece of God

Do you ever find yourself saying the right things at the right time to whoever needs to hear it? Maybe you even find yourself saying “I have no idea where that just came from.” The 17 frequency is the analogous mouthpiece of Source - meaning Source energy comes through you in order to say very healing things to people. Of course, on the flip side of that, perhaps at some point in your life, you have said some very harsh things to people. In its entirety, the 17-8 frequency is often held by public speakers and politicians - essentially it's meant to be a very expressive into mainstream society type of energy. Perhaps you are meant to share your story with others. What is your story? Did you ever feel like you were trapped in a life situation? Some 17-8s experience being suppressed by someone having dominion over them (a parent, an abusive partner?). Share your story and help heal others.

18-9 (Tzaddi and Tet)



Keywords: Choosing to follow spirit, past life connections

You are here to make choices and decisions. Have you found that you've had to make difficult decisions in life? Or maybe you are extremely indecisive and it's very difficult for you to make decisions. Oftentimes, there is guilt that comes with this frequency. You might be afraid of making decisions because of how they might affect other people ... but the reality is that there is no right or wrong, it's just a different experience depending on your choice. Spiritually speaking, you're an old soul with many past lives coming into this life to decide whether or not to “follow Spirit or not” in this life. Meaning, will you choose to follow spirituality or stay in the material world of possessions. The choice is yours. You also connect to past life qualities of your soul (ie if you were a Shaman in a past life, maybe now you connect to plants really easily or if you had an injury in a past life, maybe you feel it in this life too). This frequency is also a phenomenal business frequency. These people are phenomenal leaders and have the ability to see futuristic trends.

19-1 (Kof and Aleph)



Keywords: Holding space, Bringing spiritual energies into a physical structure

Depending on how this frequency is playing out in your life, it can be problematic when it comes to societal, cultural, and/or family expectations of you. Oftentimes you can feel very restricted by these expectations. However, your goal is to be free of all of them. You're either already funny and laugh a lot or you're being asked to bring more laughter into your life and not take yourself so seriously. It's possible when you were younger, you were over-emotional, demanding, and maybe a bit of a know-it-all. I had one client with this frequency in his Spiritual Karma and he showed up as extremely cynical in life. However, on the flip side, this is such a beautiful philanthropy frequency. The people who have a 19-1 in their chart have the ability to bring spiritual energies into a physical structure. This could be a business, a website, a book, a piece of art or simply by holding space for another. Many that I have worked with had a huge drive to create a space of their own (like a yoga studio, etc) from which they want to practice their healing/spiritual practices (especially if this frequency is found in the spiritual triangle).

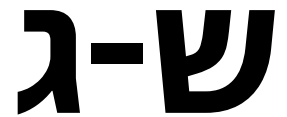
20-2 (Reisch and Bet)



Keywords: Movement, Explorer, Experiential Learner

Growing up, did you have extreme discipline imposed on you? Maybe through a religion or a military household? If not in childhood, maybe you are rigid on your body with exercising, etc? This energy is all about movement, so oftentimes early in life, it shows up as the opposite. Because there is so much up and down movement, you might find yourself having mood swings. This frequency also has the potential to bring conflict into your life, as the lesson here is war to peace, so until you find internal peace within yourself, conflict might continue to happen. Once you're free from the shadow side of this frequency, you are meant to be an experiential learner. You most likely love to travel, experience different cultures, and learn new things. If you're not physically traveling, your mind is non-stop. This makes you a great business owner and problem solver because you're always trying to find another way, a better way and you're always trying different solutions.

21-3 (Shin and Gimmel)



Keywords: Endurance, Warrior, Inner Strength

Do you feel like you've had to endure quite a bit in life? Maybe you had a tough childhood? This frequency is usually about the lesson of endurance and cultivating inner strength, so there can be hardships and obstacles to overcome along the way. This is the feeling of "the last warrior standing" on the battlefield. You're meant to build up endurance and be extremely expressive, possibly becoming an advocate of sorts. Possibly a lawyer, a professor, or some other profession where you can stand up for those who can't speak for themselves. You're most likely here in a service incarnation (here to help others). Oftentimes, 21-3s tend to do things the hard way. But they are also very intelligent and enjoy solving challenging problems. In a nutshell, you are a master communicator and a warrior soul.

22-4 (Reisch and Bet)



Keywords: Completion, Multidimensional, Connection to Source

Often this frequency carries the feeling of abandonment and possibly a feeling of complete disconnect from oneself and others. At its core, this is the most powerful connection to Source, so when the shadow side of this frequency is playing out, it can feel like a complete disconnect. If this frequency is sitting in the spiritual triangle, you might actually feel how multidimensional you are as a being. Often, my clients, have very vivid dreams - that's because they are astral traveling at night and many of them remember their travels. This is also a wealth-building frequency. You have a tremendous ability to create wealth in this life if you just trust in the abundance of Source energy. Because this is the last frequency, it speaks to completion and tells me that you're most likely graduating something on a soul level. I've also seen infertility challenges come up with this frequency or, the opposite, quite a few accidental children. But you are a very versatile person and ultimately, you are here to learn to access all your capabilities within and share them with the world.

What will your birth name reveal?

2 Ways To Engage

Personal reading with Gellyahnah

You will get:

- 1-hour LIVE reading via zoom
- Recording of our session
- Your unique Soul Contract chart
- Invite into Facebook Community
-

\$205

[Click to Schedule](#)

The Digital Soul Contract Reading

You will get:

- Your unique Soul Contract chart
- Access to detailed videos explaining all the frequencies found within your name
- Case studies of each frequency
- Invite into Facebook Community

\$97

[Click to Purchase](#)

Benefits of a Reading

1

Understand the deepest soul truth of why you're here on Earth.

2

When you hear the truth of your life, it can bring great relief.

3

Get an understanding of the spiritual map of life that your soul planned out for your life.

4

See your full potential from your soul's perspective for this lifetime.

5

Get a deep understanding of your karmic patterns and finally be able to move forward.

Frequently Asked Questions

1

Q: What if I was adopted and my name changed:

A: We still use the original name on your birth certificate because those are the energies your soul chose to come in with. However, if you only have your adopted name, use that as it will still give you a big part of your soul's plan.

2

Q: I don't use my birth name and have a different name I resonate with.

A: This is common, but your birth name still carries your soul's plan. It's like your birth date; you can't change that initial energy vibration. The current name that you use becomes an "overlay" energy.

3

Q: What if I was born outside of the US?

A: If you were born in a non-English speaking country, but your name was written in the Latin alphabet, use your name as it was written. If you were born in a country where Latin language is NOT used on the birth certificate (ie in Russia or Greece), use the equivalent English letters that you would use for your birth name.

Ready to take the next step?

Personal reading with Gellyahnah

You will get:

- 1-hour LIVE reading via zoom
- Recording of our session
- Your unique Soul Contract chart
- Invite into Facebook Community

\$205

[Click to Schedule](#)

The Digital Soul Contract Reading

You will get:

- Your unique Soul Contract chart
- Access to videos explaining all the frequencies found within your name
- Case studies of each frequency
- Invite into Facebook Community

\$97

[Click to Purchase](#)



*Just had my soul contract decoded
and it was incredible! I've never felt
so validated and seen. My
confidence has skyrocketed. I was
drawn to Gellyahna's work for a
reason. Thanks!*

Layne L.

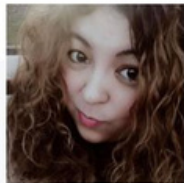
”



The soul contract reading you gave me was amazing and filled with so much information! Literally life-changing!! Thank you!

Amanda A

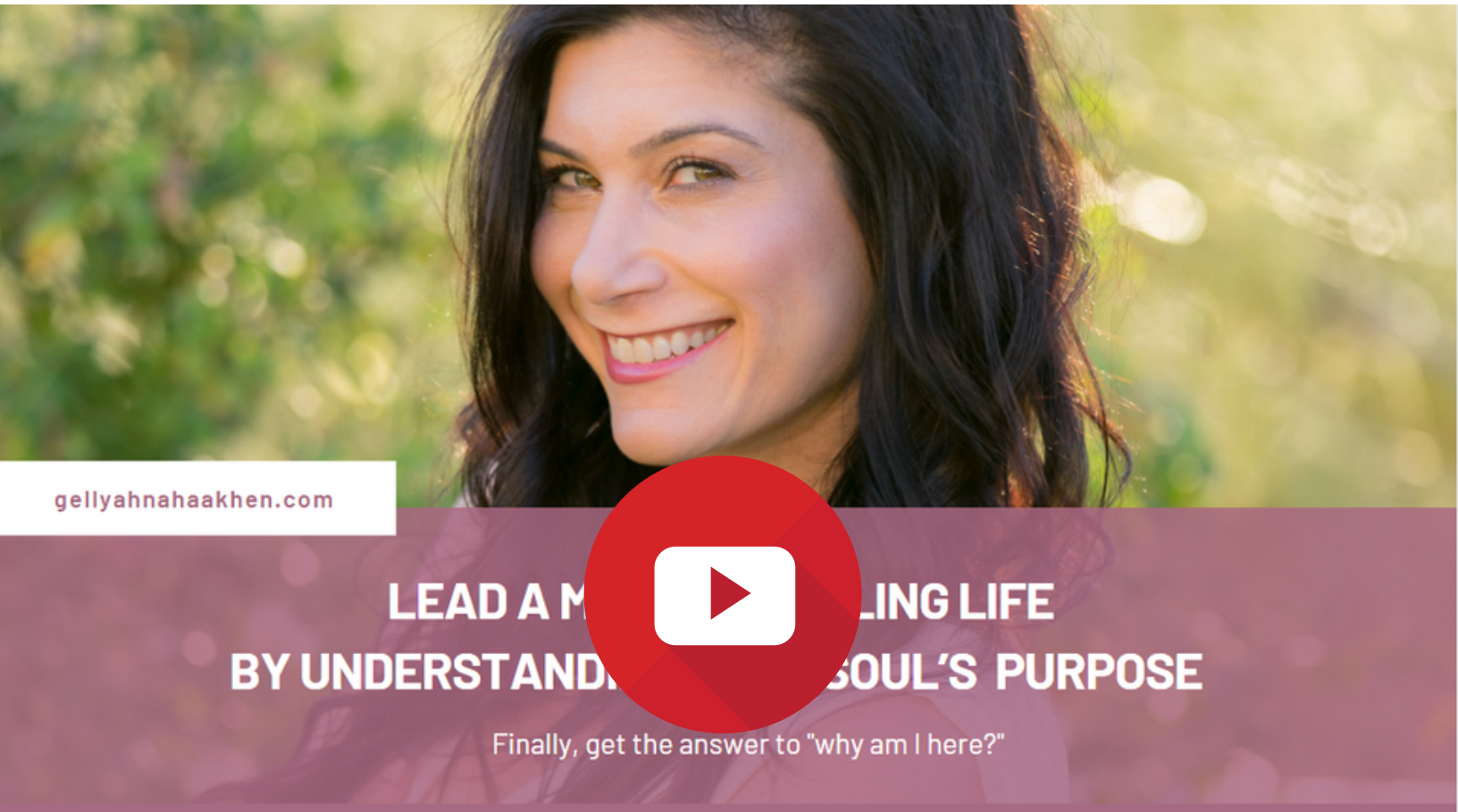
”



Thank you so much again for my reading ... it was so accurate and I'm so much more confident in where I'm heading in life. Thank you, again!

Lluvia T.

Want to see this in action? Click the image below to watch a recording of a zoom call giving mini-readings



Everyone on my email list will be invited to the next session

Group Energy Healing

Every month, I host group energy healing sessions. If you are on a healing journey and are interested in experiencing a very powerful energy healing, please register at the link below.

[REGISTER HERE](#)





I'm glad that our paths have
crossed and am looking
forward to being a part of your
journey.

gellyahnah25@gmail.com

*In Light and Love,
Gellyahnah*



[Click to join my FB Group](#)



[@soul_contracts_practitioer](#)



[@soul_contracts25](#)